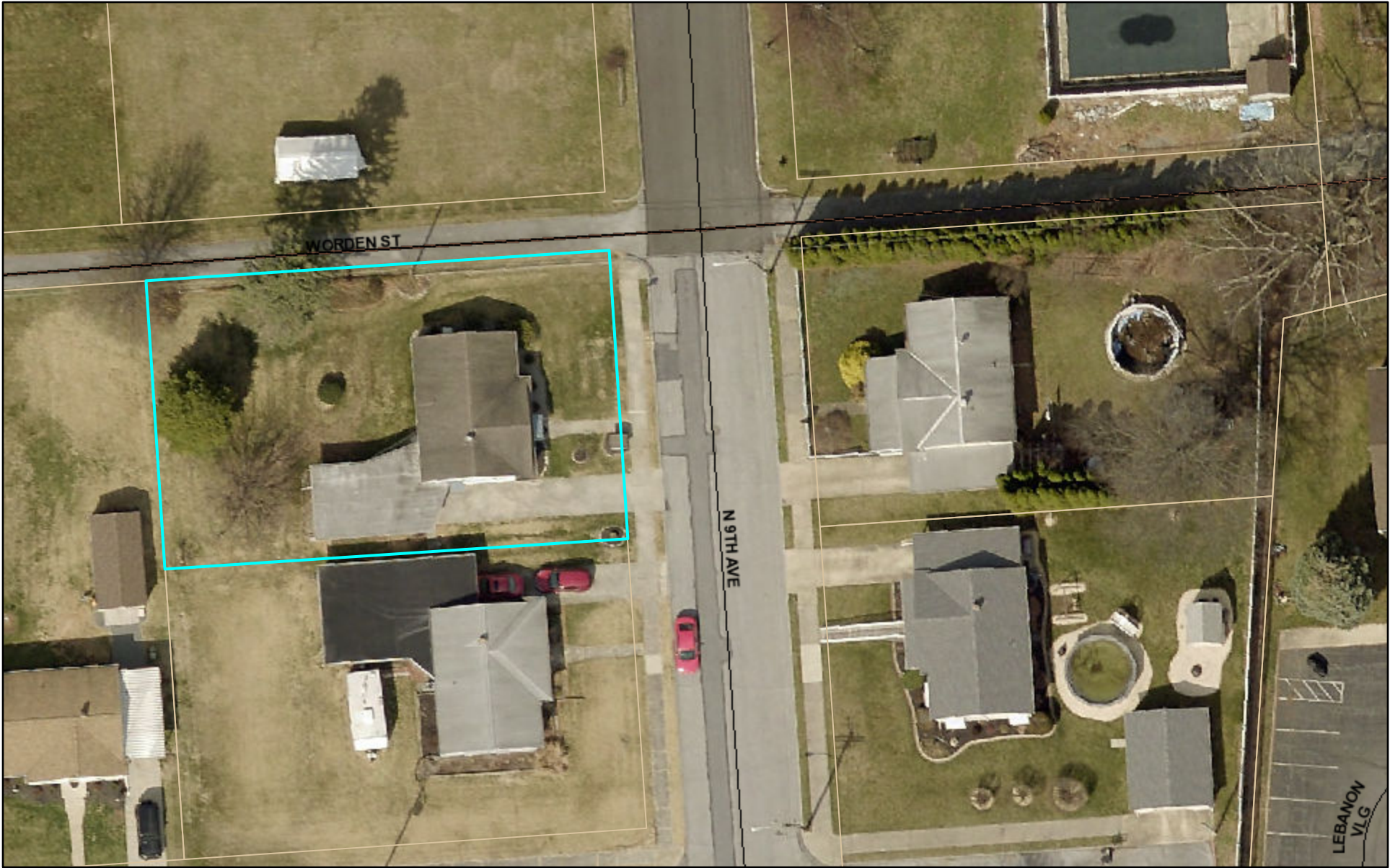


Lebanon County Property Viewer



11/12/2024, 10:08:23 AM

2022 Imagery

Red: Band_1

Green: Band_2

Blue: Band_3

Property Lines

Roads

Planned Street

Municipal Boundaries

1:564

00.010.01 mi

00.010.02 km

LCCGIS, Esri Community Maps Contributors, PSU Office of Physical Plant, data.pa.gov, © OpenStreetMap, Microsoft, Esri, TomTom, Garmin, Lebanon County

Disclaimer: Tax maps show the approximate boundaries of taxable and non-taxable property. The property boundaries depicted should not be interpreted as the legal boundary description. The legal boundary description can be obtained from the property's deed.